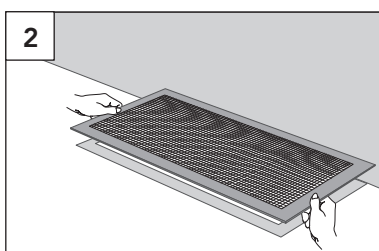
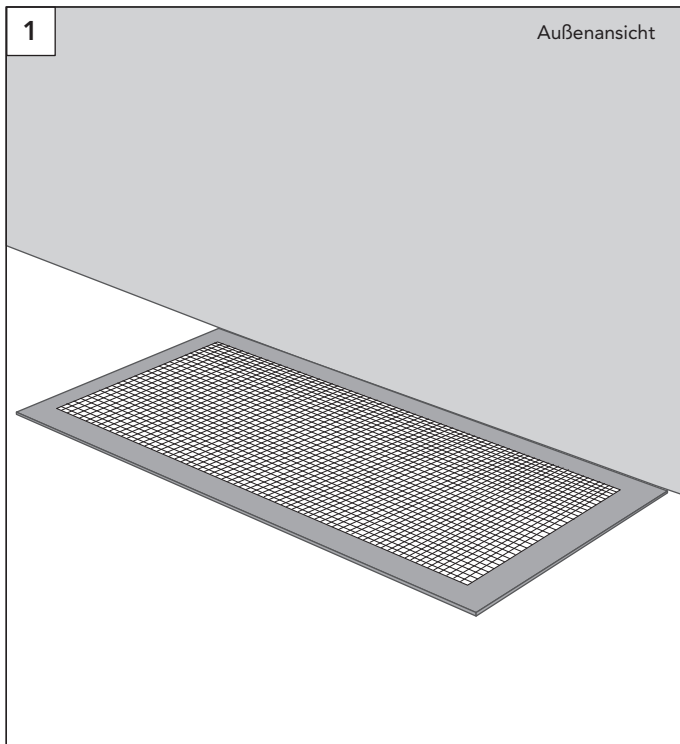
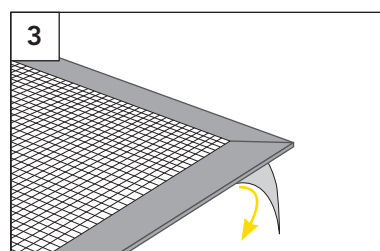


CK 8 | CK 9

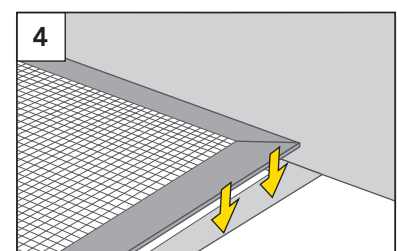
Lichtschacht



Anlage anhalten



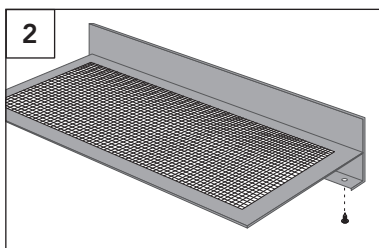
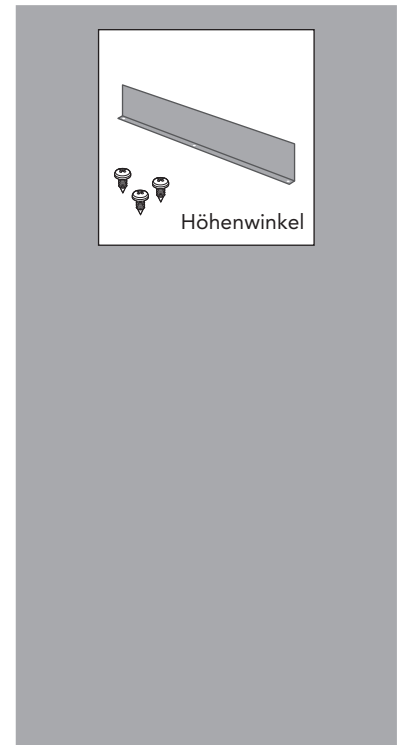
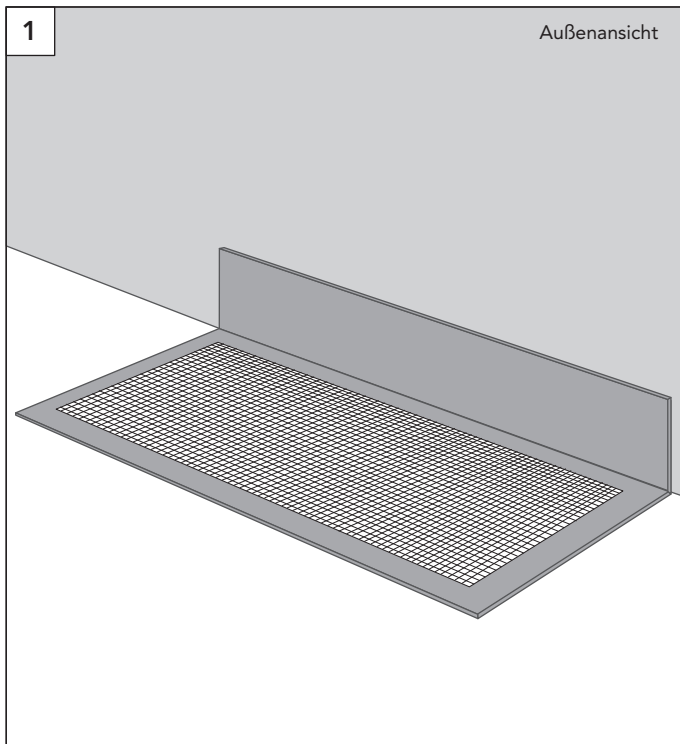
Schutzfolie abziehen



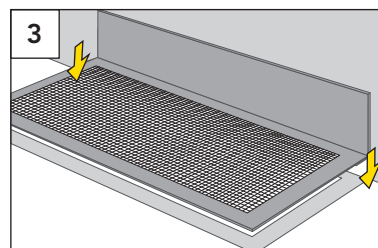
Anlage aufsetzen und andrücken

CK 9

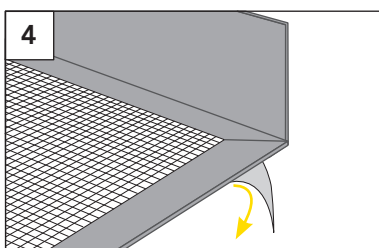
Lichtschacht mit Höhenwinkel



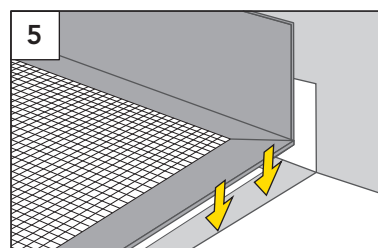
Höhenwinkel von unten anschrauben



Anlage mit Höhenwinkel anhalten



Schutzfolie abziehen



Anlage mit Höhenwinkel aufsetzen und andrücken